

Site Safety

WA SAFETY
Helping You Work Safely



Our range of Site Safety products are sourced direct from leading Global manufacturers, to ensure continuity of supply and maximum value on every product.

The MAXSafe and RAPIDSTEP Trademarks have become well known and well respected across many industries, and have a proven track record.

We are more than happy to work with you to make absolutely certain that you are getting the right product for the right application, so speak to us today!

Lead Stands



MAXSafe[™] Poly Base Lead Stand

Complete with non-conductive fibreglass pole and plastic lead holder.
1.2m - 2.4m H

Code	Description
MAX-LSPB	Lead stand-poly base



MAXSafe[™] Metal Base Lead Stand

Complete with metal pole and plastic lead holder.
1.2m - 2.4m H

Code	Description
MAX-LSMB	Lead stand-metal base

Lead Hooks



Lead Hook - Standard

Standard electrical lead hook, non-conductive and non-corrosive.

Code	Description
MAX-LHSTD	Lead hook - Standard



Lead Hook - Heavy Duty

Heavy duty lead hook SWL tested to 50kg. Non-conductive and non-corrosive.

Code	Description
MAX-LHHD	Lead hook - Heavy Duty

Butt Bin

Butt out safely with the MAXSafe Butt Bin!

- ✓ UV Stable Poly.
- ✓ C/W Galv Bucket.
- ✓ Design restricts oxygen to quickly extinguish butts.
- ✓ Includes integrated tab for hold down and wind protection.
- ✓ Rain protective design keeps water out and eliminates odour.
- ✓ Top of container removes easily to access and empty internal bin.



Product #
MAX-BB01

Matting

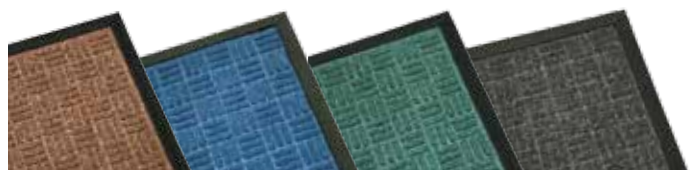
Anti Fatigue Rubber King

- Ideal for engine rooms, ute mats, horse floats, workstations etc. Large holes allow quick drainage
- Will resist lubricants, welding and hot machine sparks



Code	Description
IR90150	900 x 1500mm Ring Mat

Endura Entrance Mat



Code	Size	Description
DM6090B	600 x 900mm	Brown Entrance Mat
DM6090BL	600 x 900mm	Blue Entrance Mat
DM6090G	600 x 900mm	Green Entrance Mat
DM6090C	600 x 900mm	Charcoal Entrance Mat

\$+/' 'WY ~ \$! \$*' (' + " ! " , ! /
4F > 'B74L' AB ^ J 4F49GL6B@ e4H

Flag Bunting - 30mtr Rolls



Code	Description
BU1157	Orange



Code	Description
BU1151	Yellow/Black



Code	Description
BU1152	Blue



Code	Description
BU1153	White/Blue



Code	Description
BU1155B	Fluro Green



Code	Description
BU1155	Green



Code	Description
BU1161	Red



Code	Description
BU1173	Red/Black



Code	Description
BU1162	Red/White



Code	Description
BU1167	White



Plastic Chain - 8mm X 25mtr Rolls



Code	Description
CHAIN+COLOUR	Yellow



Code	Description
CHAIN+COLOUR	BLACK/YELLOW



Code	Description
CHAIN+COLOUR	Red/White



Code	Description
CHAIN+COLOUR	WHITE

Please note images depicted may be for display purposes only , actual product packaging may vary

Site Products



Code	Description
RF360	Roadside flashing light - Amber



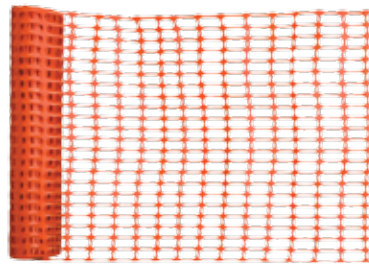
Code	Description
AMSPC	Star picket caps - pk of 100



Code	Description
TW075	Traffic wand.



Code	Description
USBT	Breakdown triangles



Code	Description
BM01	Barrier mesh - 6kg 1 meter x 50 meter



Code	Description
RSPL400	Safety steps - Orange



Code	Description
9MAH045D	Disposable air horn.



Code	Description
DAH09	Rechargeable air horn and pump.

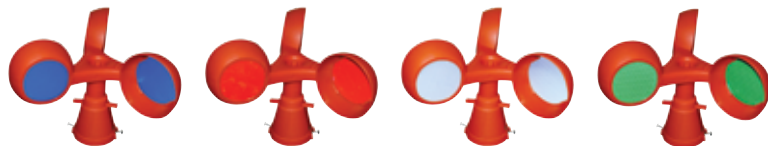
PVC & Metal Guide Post

Metal Guide Post

Code	Description
AMGPST1	Premium steel guide post 2mm thick, c/w red/white reflectors. 1350mm L.

PVC Guide Post

Code	Description
AMGPPVC1	PVC Standard Flexible Guide Post, 4mm thick c/w red/white reflectors. 1350mm L.



Product #	Product #	Product #	Product #
Blue MAX-CSB	Red MAX-CSR	White MAX-CSW	Green MAX-CSG

- ✓ Light weight PVC construction.
- ✓ Different colour reflective circles available.
- ✓ Gives day and night visible warning.
- ✓ Very cost effective - wind powered.
- ✓ C/W screws for easy attachment.



Product #	Product #	Product #
Yellow MAX-CSY	Orange MAX-CSO	Lime Green MAX-CSLG

MAXSafe Cone Spinner



Speed Humps

SPEED HUMPS STANDARD DUTY RUBBER

A modular speed control system consisting of 500mm body and 180mm end modules. The modules are manufactured from high quality, natural rubber and come in either yellow or black. When laid in an alternating pattern they meet the Australian Standards for colour, height, shape and ramp angle. Suitable for car parks, schools, shopping centres or factory complexes.



Code	Description
SPD 500Y	500mm Body module - Yellow
SPD 500B	500mm Body module - Black
SPD E5Y	180mm End module - Yellow
SPD E5B	180mm End module - Black

Rubber Corner Protector



Code	Description
SCPR1	800mm (h) x 35mm (thick)

Rubber Cable Cover



Product #	Description	Dimensions (W x D x H)
SRCC3	Channels suit up to 3 cables. Channel Size 500mm H x 60mm W	900mm x 200mm x 75mm
SRCCEC	End caps to suit - pair	

Mirrors



Interior Convex Mirror

Code	Description
CMINT350	350mm Ø Indoor Convex Mirror
CMINT450	450mm Ø Indoor Convex Mirror
CMINT600	600mm Ø Indoor Convex Mirror
CMINT800	800mm Ø Indoor Convex Mirror



Exterior Convex Mirror

Code	Description
CMEXT450	450mm Ø Outdoor Convex Mirror
CMEXT600	600mm Ø Outdoor Convex Mirror
CMEXT800	800mm Ø Outdoor Convex Mirror
CMEXT1000	1000mm Ø Outdoor Convex Mirror
CMEXT1200	1200mm Ø Outdoor Convex Mirror



Premium Wheel Chocks

Premium polyurethane wheel chock size 1.5

- Tough - acid and oil resistant
- Suits Tyre Size: 400mm - 800mm
- Dimensions: 180mm L x 115mm W x 100mm H
- Weight: 1 kg

Suitable for most LV'S, 4x4's trailers, lighting, towers, caravans etc.



Code	Description
SWC101.5	Wheel Chock - Size 1.5



Code	Description
SWC-USB1.5	U shaped Bracket - to suit size 1.5 chock-Single mount



Code	Description
SWC-USB1.5D	U shaped Bracket - to suit size 1.5 chock-Double mount



Rubber Wheel Chocks



Code	Description
SEWC01	Rubber wheel chock 270 x 120 x180mm



Code	Description
SEWC02	Rubber wheel chock 200 x 100 x150mm

Wheel Stops

Wheel stops are an essential part of any car park. Designed to inhibit encroachment into an opposing parking space, or contact with high curbs.

Suitable for: hotels, airports, commercial offices, hospitals, recreational centres etc.

MAXSafe Wheel Stops are moulded from a tough, recycled rubber compound and is finished with highly visible yellow marker plates. Complies with Australia Standard AS2890.1:2004

Product #	Description
RWS1650	Length: 1650mm Width: 160mm Height: 100mm Weight: 18kg Fixing: 3 x 20mm Dia. fixing points



Product #	Description
RWS	Ashfelt spikes - 350mm long Simply hammer into any ashfelt surface

Flashing Red LED Beacon



Code	Description
RLCB-1	Light sensitive red LED beacon. Great for temporary delineation of danger and blasting areas. Power is via 2xD Cell Batteries (comes complete with 5 sets). Run time is over 300 hours

Suitable for use with traffic cones and delineation posts.

Solar LED Beacon



Code	Description
SWB-RED	160mm Red Light Sensitive Solar Warning Light
SWB-YLW	160mm Yellow Light Sensitive Solar Warning Light
SWB-GRN	160mm Green Light Sensitive Solar Warning Light
SWB-BLU	160mm Blue Light Sensitive Solar Warning Light
SWB-WHT	160mm White Light Sensitive Solar Warning Light

Portable Expanding Barriers



Code	Description
EB32-Y	950mm x 3.2 metre Yellow Expanding Barrier
EB32-BY	950mm x 3.2 metre Yellow/Black Expanding Barrier
EB32-RW	950mm x 3.2 metre Red/White Expanding Barrier

Site Barrier - Reflective



Code	Description
SBBL	Barrier board & pair of triangle legs

Asbestos Bags



Code	Description	Pk Qty	Size
AB69	Heavy duty poly bags, printed for safe disposal of asbestos	50	900 x 600mm
AB71	Heavy duty poly bags, printed for safe disposal of asbestos	50	1100 x 700mm

Barrier Tapes



Code	Description
BTYB	75mm x 300m Barrier Tape - Black/Yellow



Code	Description
BTYC	75mm x 300m Barrier Tape - Yellow/Caution



Code	Description
BTRWD	75mm x 300m, Barrier Tape - Red/White Danger



Code	Description
BTRBW	75mm x 300m Barrier Tape - Blue/ White



Code	Description
BTGW	75mm x 300m Barrier Tape - Green/White



Code	Description
BTRW	75mm x 300m Barrier Tape - Red/White

Anti-slip Tapes



Code	Description
AST1Y	25mm x 18m, Yellow Anti Slip Tape
AST2Y	50mm x 18m, Yellow Anti Slip Tape
AST4Y	100mm x 18m, Yellow Anti Slip Tape
AST6Y	150mm x 18m, Yellow Anti Slip Tape



Code	Description
AST1YB	25mm x 18m, Black/Yellow Anti Slip Tape
AST2YB	50mm x 18m, Black/Yellow Anti Slip Tape
AST4YB	100mm x 18m, Black/Yellow Anti Slip Tape
AST6YB	150mm x 18m, Black/Yellow Anti Slip Tape



Code	Description
AST1B	25mm x 18m, Black Anti Slip Tape
AST2B	50mm x 18m, Black Anti Slip Tape
AST4B	100mm x 18m, Black Anti Slip Tape
AST6B	150mm x 18m, Black Anti Slip Tape

Adhesive Backed



Code	Description
BT1Y2A	75mm x 300m x 1mm Barrier Tape - Yellow Danger Asbestos



Code	Description
BT1Y3	75mm x 300m Adhesive backed tape-caution asbestos fibres



Code	Description
AST1W	25mm x 18m, White Anti Slip Tape
AST2W	50mm x 18m, White Anti Slip Tape
AST4W	100mm x 18m, White Anti Slip Tape
AST6W	150mm x 18m, White Anti Slip Tape

Reflective Tapes



Code	Description
CT1Y	50mm x 5m Reflective Tape – Yellow, Class 1
CT5Y	50mm x 45.7m Reflective Tape – Yellow, Class 1
RT2Y	50mm x 10m Reflective Tape – Yellow, Class 2
RT3Y	50mm x 45.7m Reflective Tape – Yellow, Class 2



Code	Description
CT1R	50mm x 5m Reflective Tape – Red, Class 1
CT5R	50mm x 45.7m Reflective Tape – Red, Class 1
RT1R	50mm x 5m Reflective Tape – Red, Class 2
RT2R	50mm x 10m Reflective Tape – Red, Class 2
RT3R	50mm x 45.7m Reflective Tape – Red, Class 2



Code	Description
CT1W	50mm x 5m Reflective Tape – White, Class 1
CT5W	50mm x 45.7m Reflective Tape – White, Class 1
RT1W	50mm x 5m Reflective Tape – White, Class 2
RT2W	50mm x 10m Reflective Tape – White, Class 2
RT3W	50mm x 45.7m Reflective Tape – White, Class 2



Code	Description
CT5LG3M	50mm x 45.7m Reflective Tape – Lime Green, Class 1
CT6LG3M	75mm x 45.7m Reflective Tape – Lime Green, Class 1
CT5LG	50mm x 45.7m Reflective Tape – Lime Green, Class 1
CT6LG	75mm x 45.7m Reflective Tape – Lime Green, Class 1
CT9LG	100mm x 45.7m Reflective Tape – Lime Green, Class 1



Code	Description
RT1RW	50mm x 5m Reflective Tape – Red/White, Class 2
RT2RW	50mm x 10m Reflective Tape – Red/White, Class 2
RT3RW	50mm x 45.7m Reflective Tape – Red/White, Class 2
RT4RW	75mm x 5m Reflective Tape – Red/White, Class 2
RT6RW	75mm x 45.7m Reflective Tape – Red/White, Class 2
RT9RW	100mm x 45.7m Reflective Tape – Red/White, Class 2



Code	Description
RT3BL	50mm x 45.7m Reflective Tape – Blue, Class 2



Code	Description
RT3GW	50mm x 45.7m Reflective Tape – Green/White, Class 2



Code	Description
RT1YB	50mm x 5m Reflective Tape – Yellow/Black, Class 2
RT2YB	50mm x 10m Reflective Tape – Yellow/Black, Class 2
RT3YB	50mm x 45.7m Reflective Tape – Yellow/Black, Class 2
RT6YB	75mm x 45.7m Reflective Tape – Yellow/Black, Class 2
RT9YB	100mm x 45.7m Reflective Tape – Yellow/Black, Class 2



Code	Description
RT2RY	50mm x 10m Reflective Tape – Red/Yellow, Class 2
RT3RY	50mm x 45.7m Reflective Tape – Red/Yellow, Class 2
RT9RY	100mm x 45.7m Reflective Tape – Red/Yellow, Class 2

Luminous Tapes



Code	Size
GT1A	50mm x 5m, Luminous - Chevron
GT1B	50mm x 5m, Luminous - Running, Exit Man picto with left Arrow
GT1C	50mm x 5m, Luminous - Running, Exit Man picto with Right Arrow
GT1D	50mm x 5m, Luminous - Plain

Flagging Tapes



Code	Size	Colour
FLT1B	25mm x 75m	Blue
FLT1G	25mm x 75m	Green
FLT1P	25mm x 75m	Pink
FLT1W	25mm x 75m	White
FLT1FG	25mm x 75m	Fluoro Green
FLT1O	25mm x 75m	Orange
FLT1R	25mm x 75m	Red
FLT1Y	25mm x 75m	Yellow

Floor Marking Tapes



Code	Description
FT1Y	48mm x 33m, Floor Marking Tape - Yellow
FT2Y	72mm x 33m, Floor Marking Tape - Yellow



Code	Description
FT1YB	48mm x 33m, Floor Marking Tape - Yellow/Black
FT2YB	72mm x 33m, Floor Marking Tape - Yellow/Black



Code	Description
FT1R	48mm x 33m, Floor Marking, Tape - Red
FT2R	72mm x 33m, Floor Marking, Tape - Red



Code	Description
FT1RW	48mm x 33m, Floor Marking, Tape - Red/White
FT2RW	72mm x 33m, Floor Marking Tape - Red/White



Code	Description
FT1G	48mm x 33m, Floor Marking, Tape - Green
FT2G	72mm x 33m, Floor Marking, Tape - Green



Code	Description
FT1GW	48mm x 33m, Floor Marking, Tape - Green/White
FT2GW	72mm x 33m, Floor Marking, Tape - Green/White



Code	Description
FT1BK	48mm x 33m, Floor Marking, Tape - Black



Code	Description
FT1BL	48mm x 33m, Floor Marking, Tape - Blue



Code	Description
FT1W	48mm x 33m, Floor Marking, Tape - White

Packaging Labels



Code	Size	Description
PT001	100mm x 75mm,	Glass With Care
PT002	100mm x 75mm,	Heavy
PT003	100mm x 75mm,	This Way Up
PT004	100mm x 75mm,	Top Load Only
PT005	100mm x 75mm,	Handle With Care
PT006	100mm x 75mm,	Fragile
PT007	100mm x 75mm,	Urgent



Code	Description	Colour
PLQUA	Quarantine	Orange



Code	Description	Colour
PLREJ	Reject	Red



Code	Description	Colour
PLAPP	Approved	Green

Underground Tapes

WARNING - Communication Cable Below



White with Black Text

Detectable		Non-Detectable	
Code	Size	Code	Size
UGT-DTCC	150mm x 500m	UGT-NDCC	150mm x 500m

DANGER - Electrical Cable Below



Orange with Black Text

Detectable		Non-Detectable	
Code	Size	Code	Size
UGT-DTEC	150mm x 500m	UGT-NDEC	150mm x 500m

DANGER - Gas Main Below



Yellow with Black Text

Detectable		Non-Detectable	
Code	Size	Code	Size
UGT-DTGM	100mm x 250m	UGT-NDGM	150mm x 500m

WARNING - Water Main Below



Green with Black Text

Detectable		Non-Detectable	
Code	Size	Code	Size
UGT-DTWM	100mm x 250m	UGT-NDWM	150mm x 500m

WARNING - Fire Main Below



Red with Black Text

Detectable		Non-Detectable	
Code	Size	Code	Size
UGT-DTFM	100mm x 250m	UGT-NDFM	150mm x 500m

WARNING - Irrigation Main Below



Blue with Black Text

Detectable		Non-Detectable	
Code	Size	Code	Size
UGT-DTIM	100mm x 250m	UGT-NDIm	150mm x 500m

WARNING - Stormwater Main Below



Blue with Black Text

Detectable		Non Detectable	
Code	Size	Code	Size
UGT-DTSW	100mm x 250m	UGT-NDSW	150mm x 500m

WARNING - Sewer Below



Biege with Black Text

Detectable		Non Detectable	
Code	Size	Code	Size
UGT-DTSB	100mm x 250m	UGT-NDSB	150mm x 500m

WARNING - Recycled/Reclaimed Water Below



Lilac with Black Text

Detectable		Non Detectable	
Code	Size	Code	Size
UGT-DTRR	100mm x 250m	UGT-NDRR	100mm x 500m

DANGER - Railway Signalling Cable



Orange with Black Text

Non Detectable	
Code	Size
UGT-NDRS	150mm x 500m

WARNING - Fibre Optic Cable Below



White with Black Text

Detectable		Non Detectable	
Code	Size	Code	Size
UGT-DTFO	100mm x 250m	UGT-NDFO	150mm x 500m

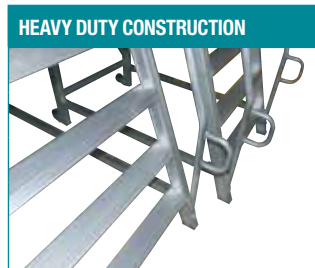


RAPIDSTEP™

Our ultra tough standard RAPIDSTEP range of Fixed height platforms have recently had a complete make over. This ensures that they are a fully compliant work platform and leading the pack in toughness and versatility.

Call now to discuss your requirement.

FULL RANGE IN STOCK



SPECIFICATIONS:

Model	Platform Height	Approx Weight	Overall Length	Overall Width	Platform Area	Safety Gate and Swing Up Bar	Steps
RS600	570	43kg	1110	1000	800 x 800	Yes	2
RS850	850	48kg	1110	1000	800 x 800	Yes	3
RS1150	1130	53kg	1210	1000	800 x 800	Yes	4
RS1400	1400	58kg	1310	1000	800 x 800	Yes	5
RS1700	1700	63kg	1415	1000	800 x 800	Yes	6
RS2000	1970	70kg	1715	1200	1000 x 1000	Yes	7
RS2250	2250	76kg	1820	1200	1000 x 1000	Yes	8
RS2550	2540	85kg	1925	1200	1000 x 1000	Yes	9
RS2800	2820	90kg	2025	1200	1000 x 1000	Yes	10
RS3100	3100	95kg	2130	1200	1000 x 1000	Yes	11



Model No: RSC2550



RAPIDSTEPTM

NEW Range of RAPIDSTEP Fixed Height Cantilever Access Platforms.

This new addition to the range is already proving a winner, as it provides the extra versatility that all service personnel are looking for.

RAPIDSTEP Platforms have proven record of handling the toughest environments.

SPECIFICATIONS:

Model	Platform Height	Approx Weight	Overall Length	Overall Width	Platform Area	Safety Gate and Swing Up Bar	Steps
RSC600	570	123kg	2110	1000	800 x 1800	Yes	2
RSC850	850	128kg	2110	1000	800 x 1800	Yes	3
RSC1150	1130	133kg	2210	1000	800 x 1800	Yes	4
RSC1400	1400	138kg	2310	1000	800 x 1800	Yes	5
RSC1700	1700	143kg	2415	1000	800 x 1800	Yes	6
RSC2000	1970	150kg	2715	1200	1000 x 2000	Yes	7
RSC2250	2250	156kg	2820	1200	1000 x 2000	Yes	8
RSC2550	2540	165kg	2925	1200	1000 x 2000	Yes	9
RSC2800	2820	170kg	3025	1200	1000 x 2000	Yes	10
RSC3100	3100	175kg	3130	1200	1000 x 2000	Yes	11

MAXSafe™ Anti-slip is a premium range of anti-slip products that are designed and manufactured in Australia, for tough Australian conditions.

All **MAXSafe™** Anti-slip products are covered by a full 5 year warranty.

MAXSafe™ Anti-slip Stair Nosing



Features:

- Suitable for all stair surfaces - metal, concrete, wood, masonry etc.
- Chemical, UV and impact resistant.
- Bright safety yellow - makes all stairs highly visible.
- AS/NZS Certified.

Product #	Size	Holes For Fixing
MAX-SN01	50 x 20 x 580mm	2
MAX-SN02	50 x 20 x 730mm	3
MAX-SN03	50 x 20 x 880mm	3
MAX-SN04	50 x 20 x 1030mm	3
MAX-SN05	50 x 20 x 1180mm	3
MAX-SN06	80 x 20 x 450mm	2
MAX-SN07	80 x 20 x 600mm	2
MAX-SN08	80 x 20 x 750mm	3
MAX-SN09	80 x 20 x 900mm	3
MAX-SN10	80 x 20 x 1200mm	3
MAX-SN11	100 x 20 x 450mm	2
MAX-SN12	100 x 20 x 600mm	2
MAX-SN13	100 x 20 x 750mm	3
MAX-SN14	100 x 20 x 900mm	3
MAX-SN15	100 x 20 x 1200mm	3

MAXSafe™ Anti-slip Ladder Rungs



Product #	Size
MAX-LR101	20mm Dia - 300mm long
MAX-LR102	20mm Dia - 350mm long
MAX-LR103	20mm Dia - 400mm long
MAX-LR104	20mm Dia - 450mm long
MAX-LR105	20mm Dia - 500mm long

Features:

- Bright Safety Yellow - Makes all rungs highly visible
- Easy to install.
- Makes rungs safer with broader surface.
- AS/NSZ Certified.



Product #	Size
MAX-LR201	25mm Dia - 300mm long
MAX-LR202	25mm Dia - 350mm long
MAX-LR203	25mm Dia - 400mm long
MAX-LR204	25mm Dia - 450mm long
MAX-LR205	25mm Dia - 500mm long

MAXSafe™ Anti-slip Conveyor Chanel

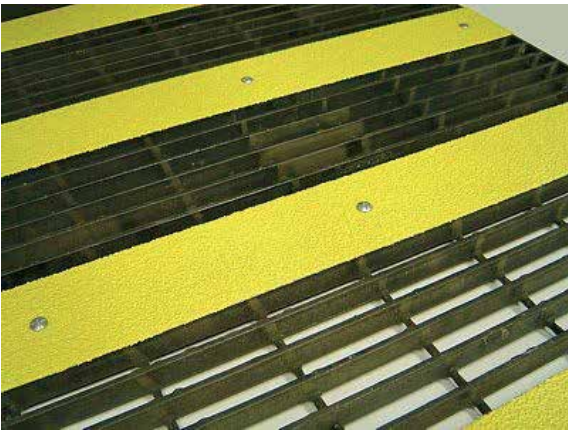


Features:

- Specifically designed to make conveyor walkways with steep incline safer.
- Bright Safety Yellow - Makes whole walkway visible.
- Chemical, UV and Impact resistant.
- AS/NZS Certified.

Product #	Size
MAX-CC01	50 x 580mm
MAX-CC02	50 x 730mm
MAX-CC03	50 x 880mm
MAX-CC04	50 x 1030mm
MAX-CC05	50 x 1180mm

MAXSafe™ Anti-slip Metal Plates



Features:

- Excellent Alternative to full decking.
- Install in minutes
- Chemical, UV, and Impact resistant.
- AS/NZS Certified.

Product #	Size	Holes for Fixing
MAX-MS01	50 x 580mm	2
MAX-MS02	50 x 730mm	3
MAX-MS03	50 x 880mm	3
MAX-MS04	50 x 1030mm	3
MAX-MS05	50 x 1180mm	3
MAX-MS06	100 x 580mm	2
MAX-MS07	100 x 730mm	3
MAX-MS08	100 x 880mm	3
MAX-MS09	100 x 1030mm	3
MAX-MS10	100 x 1130mm	3

MAXSafe™ Fixings



MAX-SF



MAX-SC1/SC2



MAX-TS



MAX-CSC



MAX-MS

Product #	Size
MAX-SF	Sika Flex 252
MAX-SC1	Saddle Clip, Bolt & Lock Nut
MAX-SC2	S/S Saddle Clip, Bolt & Lock Nut
MAX-TS	12-24 Tek screw CL3 Hex SDS
MAX-CSC	Fastener Clip Set
MAX-MS	Masonry Screws